

## Software updating with WiFi

### 1. Select WIFI hotspot

**Reset iPower but Do not Run it,**

Then Searching "AP\_xxxxxxx" hotspot, that is iPower Wifi ID

**Note:** Fix this hotspot always connected during your updating process, Once WiFi hotspot is replaced with other Wifi ID, updating will fail.



### 2. Modify Wifi Module to Transparency

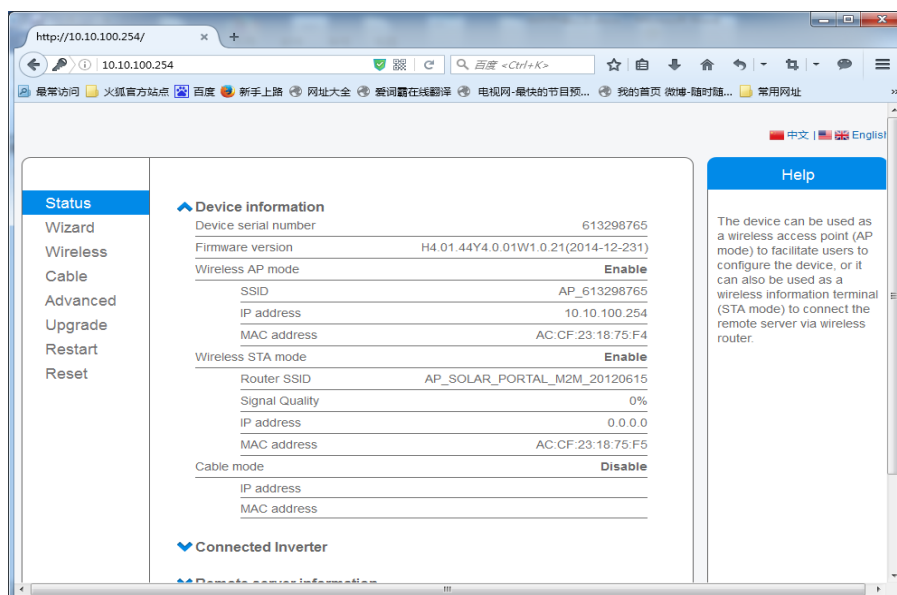
\*Before updating iPower firmware with Wifi, Firstly you need modify the wifi module to **"Transparency"**.

Visit website address: <http://10.10.100.254>,

**User Name: admin**

**Pass Code: admin**

Then step into the interface as below:

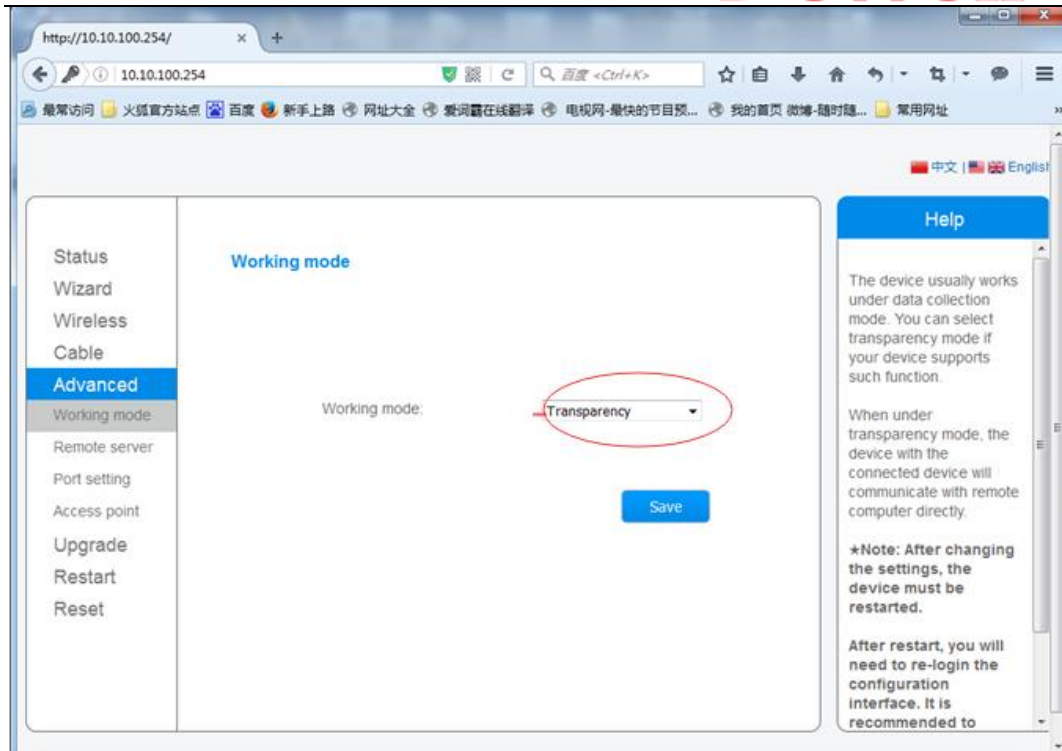


Click "Advanced"-> "Port setting" then modify the time-out 300 to 600. And "Save".

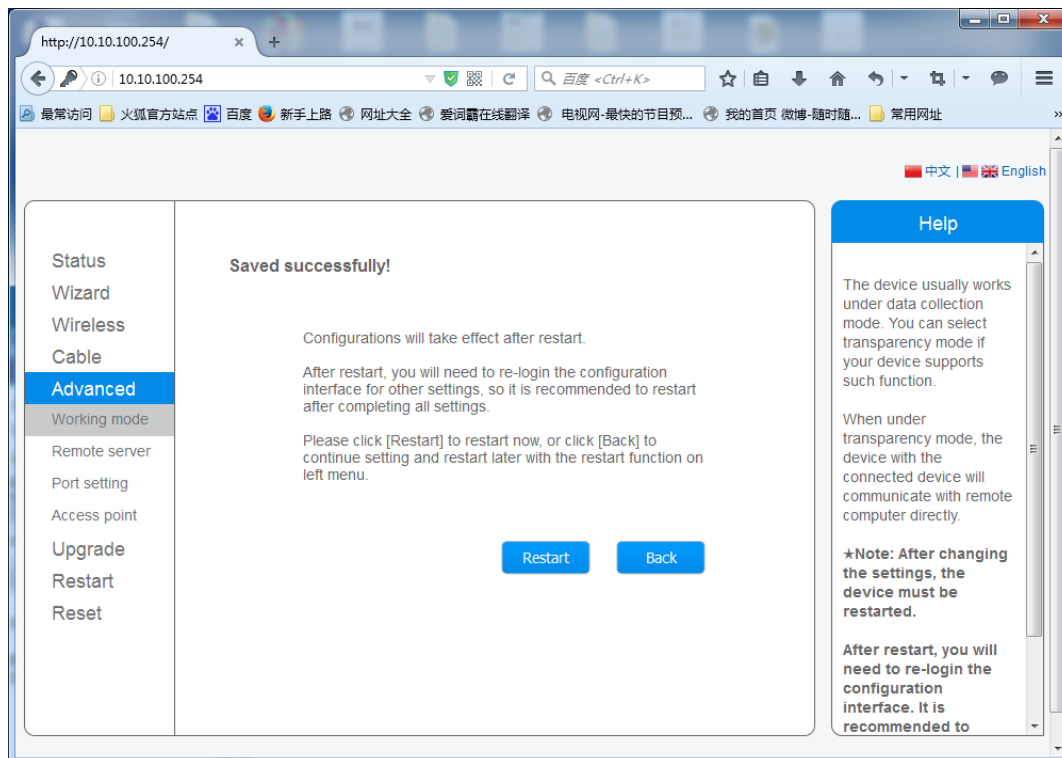
Status	<h3>Serial port parameters setting</h3> <table><tr><td>Baud rate</td><td>9600</td></tr><tr><td>Data bit</td><td>8</td></tr><tr><td>Parity bit</td><td>None</td></tr><tr><td>Stop bit</td><td>1</td></tr><tr><td>CTSRTS</td><td>Disable</td></tr></table> <div>Save</div> <hr/> <h3>Internal server parameters setting</h3> <table><tr><td>Mode</td><td>Server</td></tr><tr><td>Protocol</td><td>TCP</td></tr><tr><td>Port</td><td>8899</td></tr><tr><td>Max. TCP connections (1-32)</td><td>32</td></tr><tr><td>TCP time out setting(no more than 600s)</td><td>300</td></tr></table> <div>Save</div>	Baud rate	9600	Data bit	8	Parity bit	None	Stop bit	1	CTSRTS	Disable	Mode	Server	Protocol	TCP	Port	8899	Max. TCP connections (1-32)	32	TCP time out setting(no more than 600s)	300
Baud rate		9600																			
Data bit		8																			
Parity bit		None																			
Stop bit		1																			
CTSRTS		Disable																			
Mode		Server																			
Protocol		TCP																			
Port		8899																			
Max. TCP connections (1-32)		32																			
TCP time out setting(no more than 600s)		300																			
Wizard																					
Wireless																					
Cable																					
Advanced																					
Working mode																					
Remote server																					
Port setting																					
Access point																					
Upgrade																					
Restart																					
Reset																					

Then Click "Advanced" -> working mode

Open "Working Mode" Interface, and choose "Transparency", Then click "Save" to keep your setting.



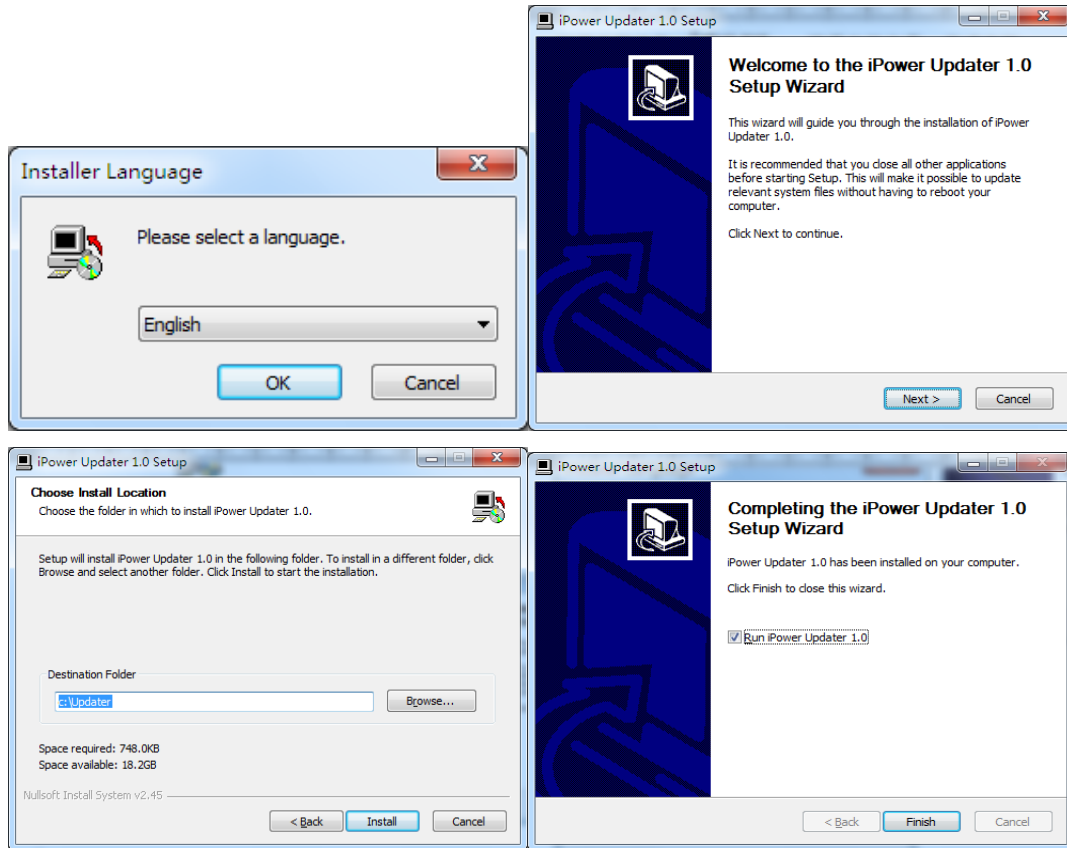
Then click "Restart" to update Wifi Module.



### 3. Install iPower Updater



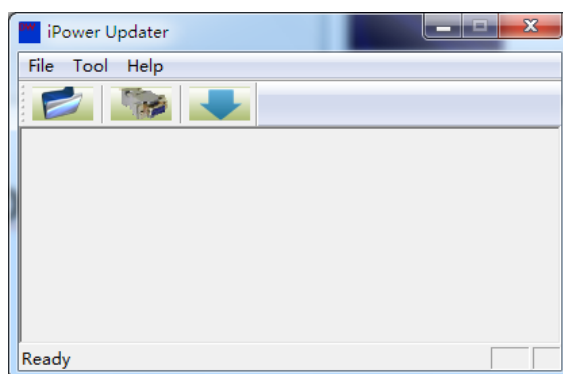
Click and open **Setup.exe** , then finish installation following manual.




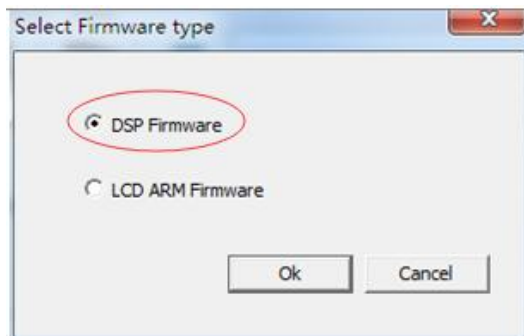
#### 4. Down Load DSP Firmware

Let Wifi connected to "AP\_xxxxxxxx" hotspot.

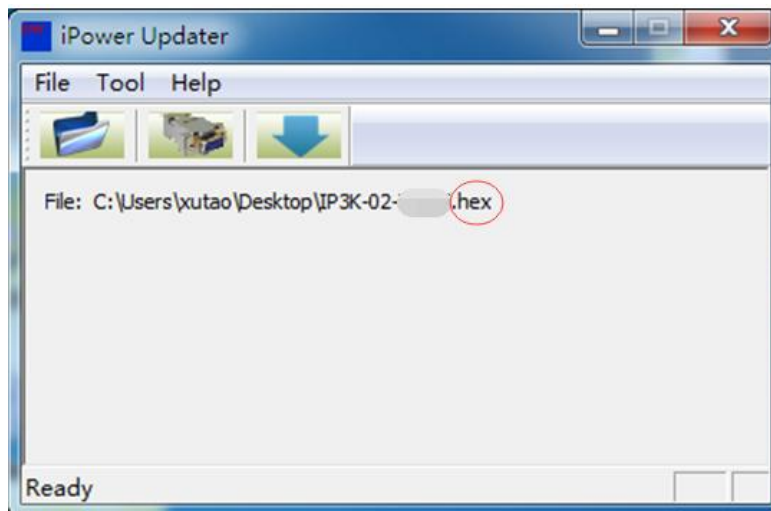
Open iPower Updater software,



Click "File"->"Open" (or click  ), Then choose DSP Firmware then "OK", see it as below.

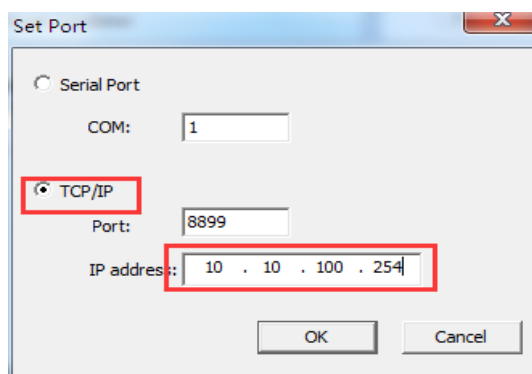


Find **DSP firmware** from dialog box (**.hex file**); complete as shown below.

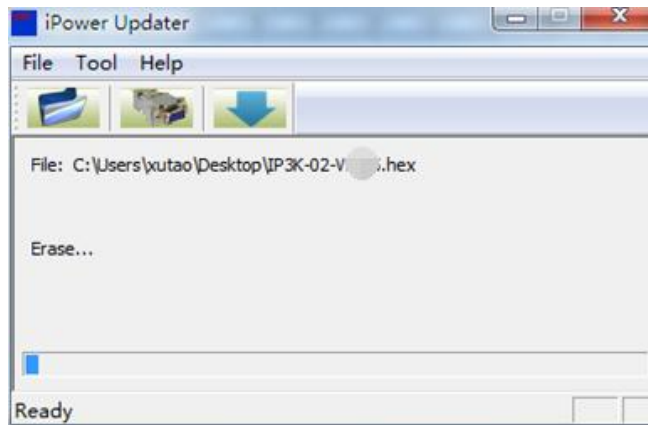


Click **"Tool"->"Set port"** (or ) ,

**Check "TCP/IP" and modify IP address to 10.10.100.254**, then "OK";



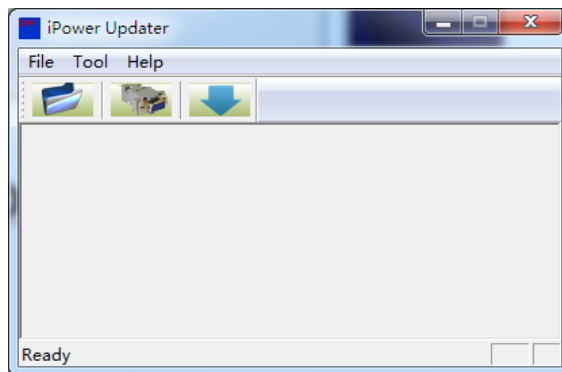
**"Tool"->"Download"** (or ) , Start download.



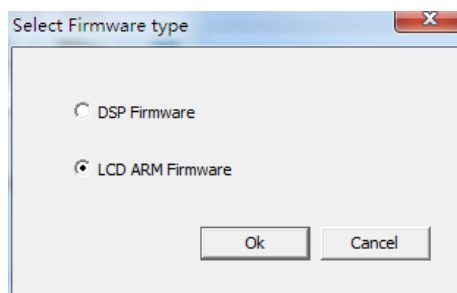
You will see the process from "Ready" till success.

## 5. Down Load LCD Firmware

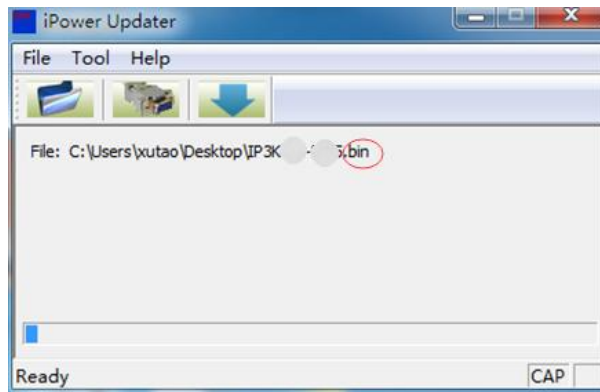
Still keep Wifi connected to "AP\_xxxxxxxx" hotspot.



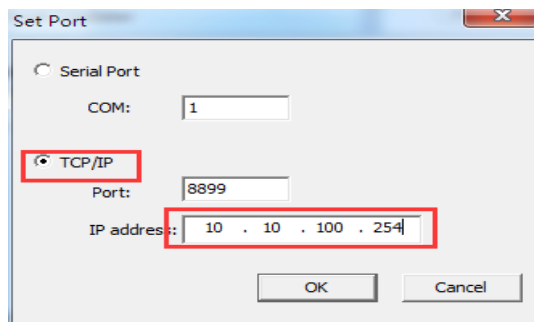
Click "File"->"Open" (or ) , check "LCD ARM Firmware", then "OK", see it as below.



Find LCD firmware from dialog box (**.bin file**), open it, complete as shown below.



Then "Tool"->"Set port" (or ) , **choose "TCP/IP" option, and modify IP address to 10.10.100.254, then "OK";**



"Tool"->"Download" (or ) , start to download

## 6. After updating, Modify Wifi Module to Data collection

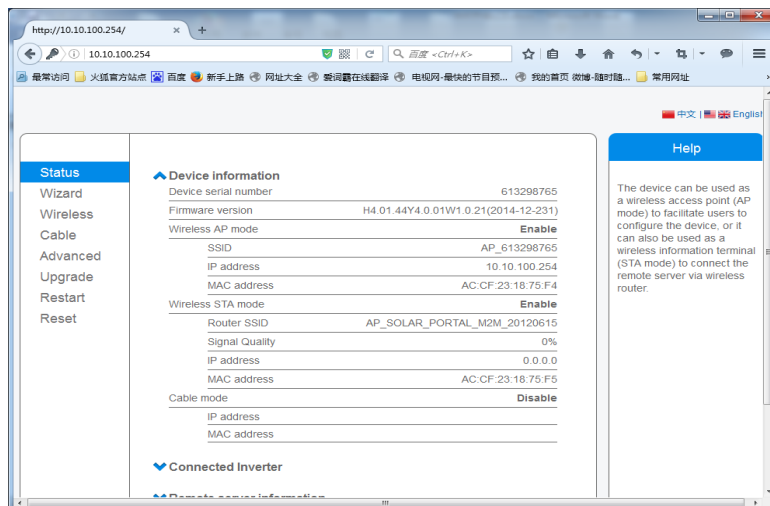
\*\*After DSP/LCD updated, you have to modify Wifi Module to "Data collection", otherwise, you can not monitor this inverter by website.

Visit website address: <http://10.10.100.254>,

**User Name: admin,**

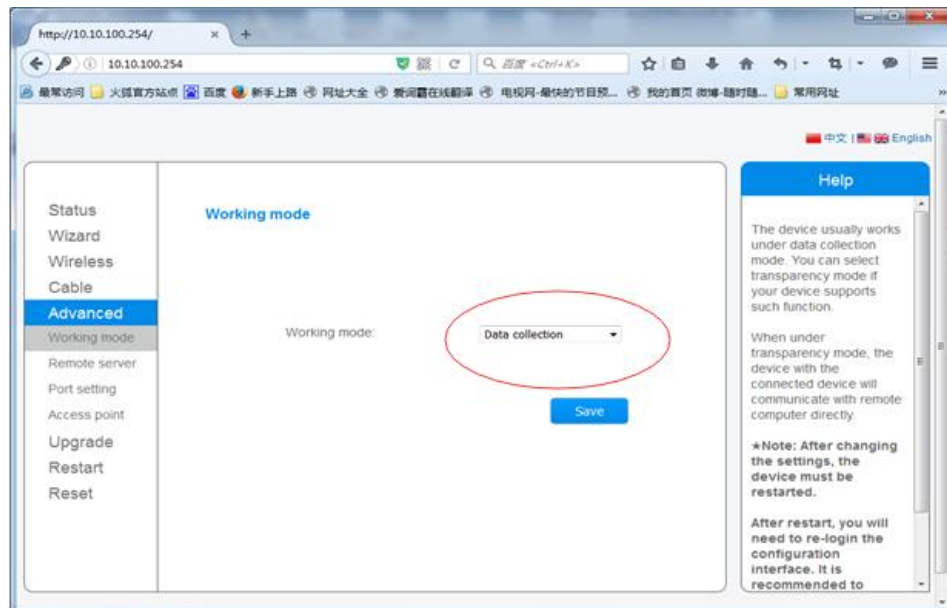
**Pass Code: admin,**

Then step into interface as below:

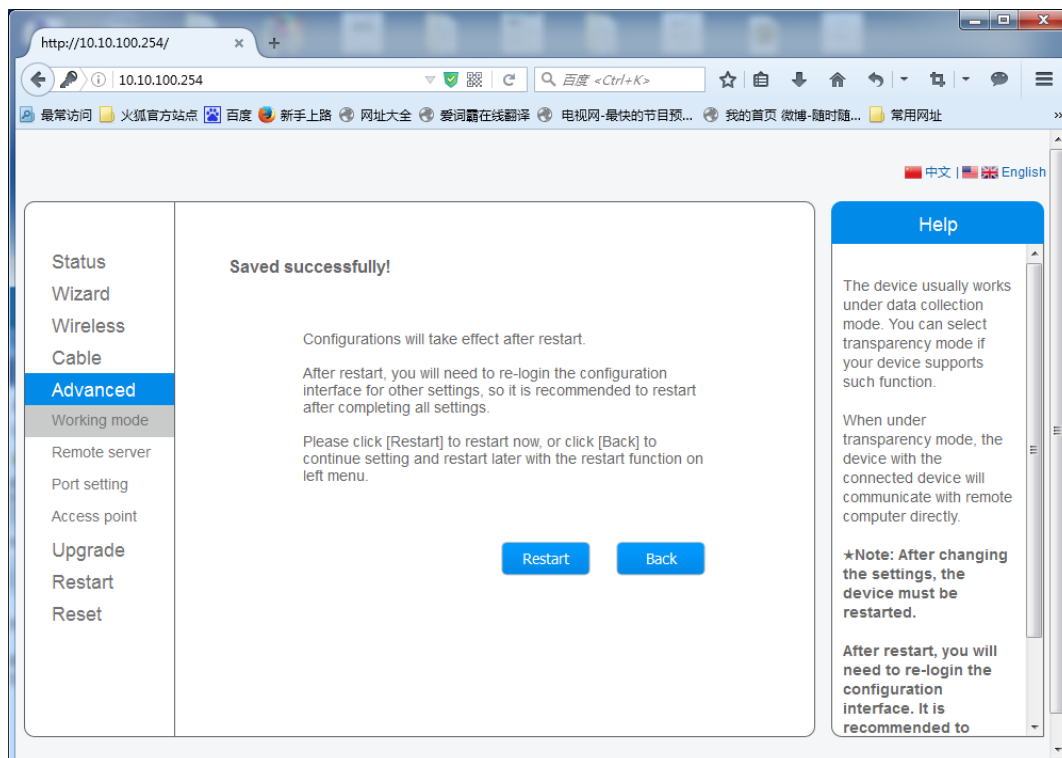


Click "Advanced" -> working mode

Change "Transparency" to "Data collection", Then click "Save" to keep your setting.



Then click "Restart" to update Wifi Module.



Ok once finish, Reset iPower!